

INMOTION CONTROLS, INC.

Industrial Radio Remote Controls

INMOTION Remote Controls with their advanced technological design easily satisfy the requirements of diverse industries. All functions are readily customized to suit **YOUR** equipment needs.



INMOTION Remote Controls advanced technology offer the user small, lightweight yet exceptionally robust Transmitters designed to reduce user fatigue, damage, wear and tear. The Receivers also adopt this technology to minimize "on-board" space requirements.

INMOTION Remote Controls ensure smooth operation under severe environmental conditions, especially where there is likely to be serious frequency interference and large variations in temperature.

MODEL 322 SERIES

INMOTION REMOTE
*8 pushbuttons with 2-step
*key switch with start/alarm

UNIQUE FEATURES INCLUDE

- *Self diagnostics which detect and report any system failure.**
- *Permanently memorized function setting.**
- *Three user selectable frequencies. (256CH by software)**
- *4.3 billion individual ID codes.**
- *Anti-Power interruption circuit.**

CERTIFICATED
RSS210
FCC part 15

Transmitter

MODEL 322 SERIES



6.4" L x 1.9" W x 1.8" H
0.6 lbs.

4 AA size alkaline batteries

- *3-stage power indicator
- *Buzzer / Alarm
- *Removable key (waterproof)
- *Changeable push button symbols
- *Shock resistant design
- *Password power-on: 4 digits
- *Output power $\leq 10\text{mW}$
- *Normal power consumption: about 40mA
- *Harmonic $\cong 65\text{dB}$
- *Modulation $\leq 2.5\text{KHz}$

Receiver

MODEL 322 SERIES



6.6" L x 6.1" W x 3.5" H
3.1 lbs.

Input: 110 VAC

- *Alarm and signal light output
- *Power source detector
- *Anti-power interrupt circuit
- *Shock resistant
- *Enhanced watch-dog circuit
- *3 superheterodyne
- *Frequency deviation tracing circuit
- *Sensitivity $\cong -110\text{dBm}$
- *Adjacent channel restrain > 80db

General

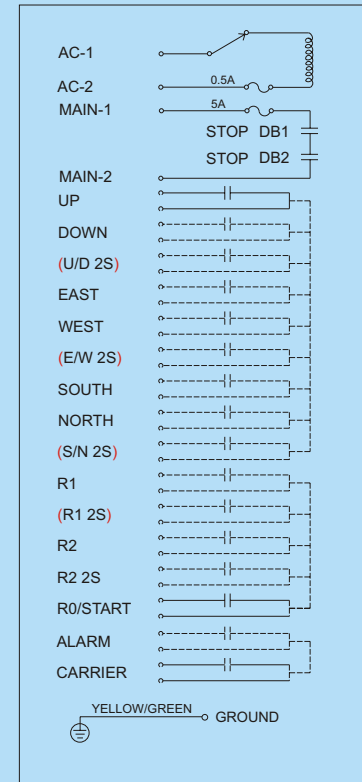
- *Enclosure: IP65 (indoor/outdoor)
- *Structure: Fiberglass
- *Phase Lock Loop (PLL)
- *Both power source and output relays with fuses
- *Synchronous transmission encoding and decoding
- *Changing frequency manual/auto
- *Auto signal searching
- *No. of functions & parameters setting > 57
- *No. of self-diagnosis > 28
- *No. of alarm > 28
- *Frequency: 415 ~ 483MHz
- *Operating temperature: $-30^{\circ}\text{C} \sim +75^{\circ}\text{C}$
- *Relays: 10A/250V
- *ID Code: 32 bit
- *Hamming distance $\cong 4$
- *Response time = 65ms
- *Static > 15KV
- *Surge > 4KV
- *Field strength > 10V/m

Standard Remote Control Function

Main Contactor - ON/OFF	
E-Stop Mushroom PB	
UP	DOWN
2 step reversing	
NORTH	SOUTH
2 step reversing	
EAST	WEST
2 step reversing	
AUX 1	AUX 2
Momentary	

NOTE: The remote control system will be provided in the standard configuration. Consult factory for special configurations, such as: Hoist Select, Hoist #2, Rotate, Lights, etc.

Remote Wire Diagram



IC INMOTION CONTROLS, INC.

P.O. BOX 820456 • DALLAS, TEXAS 75382-0456
PHONE: 888-501-2220 • FAX: 214-342-9239